

When Mother Nature attacks
How Utah will respond when disaster strikes

Joe Dougherty
Public information officer
jdougherty@utah.gov
801-664-1530
Twitter: @UtahEmergency
@BeReadyUtah
@UtahShakeOut

Utah Gov. Gary Herbert
Department of Public Safety
Division of Emergency Management
Utah Highway Patrol
Driver License Division
Who we are:

- Preparing for
- Responding to
- Recovering from and
- Mitigating future emergencies

Emergency management is:

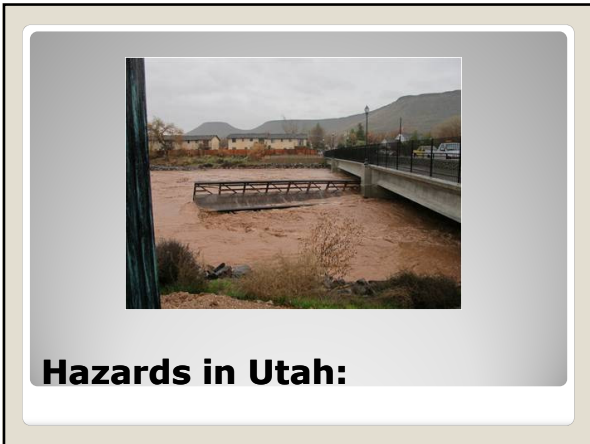


Preparedness

- Make a plan
- Get a kit
- Be informed
- Get involved -- CERT

BeReadyUtah.gov

Be Ready Utah






Hazards in Utah:

The Great Utah ShakeOut

Utah's largest earthquake drill



Earthquake threats

90 percent of residents live near the fault





The Scenario

- 7.0 magnitude earthquake:
 - Deaths: 2,300
 - Injuries: 30,000
 - Damages: 64,000 collapsed buildings -- \$35 billion
- Earthquake frequency: 350 to 400 years on the entire Wasatch Fault.
 - The last one: 350 years ago.





The Scenario

- Essential facilities:
 - 39 hospitals with 4,605 beds
 - 853 schools
 - 212 fire stations
 - 89 police stations
- Transportation: highways, railways, light rail, bus, ports and airports. More than 2,200 miles of highways and 1,902 bridges.



The Scenario

- There are 541,000 buildings in our 12 county region with a replacement value of \$115 billion.
- About 94 percent of the buildings are associated with residential housing.



The Great Utah ShakeOut



ShakeOuts in other states:

- California
- Central U.S.
- Oregon

Practice our plans

Families, businesses, government and schools

**Goal:
700,000**



- Fires
- Winter storms
- Power outages
- Cyber attacks

Other hazards

- First responders
- Public information officers
- Elected officials

Planning, Training and Exercise

- Federal grants
- Pass-through, \$18 million in FY 11

Admin/Finance



Emergency Operations Center (State EOC)

Activating the EOC:

- County declares a local emergency
- Governor declares a state of emergency
- President declares an emergency or major disaster
- Two or more state agencies are supporting local emergencies

Response

Activating the EOC:

- Current or forecasted weather conditions are indicating potential flood, high winds or severe weather
- An act or suspected act of terrorism involving multiple jurisdictions
- Special event requiring the potential response from multiple state agencies.

Response

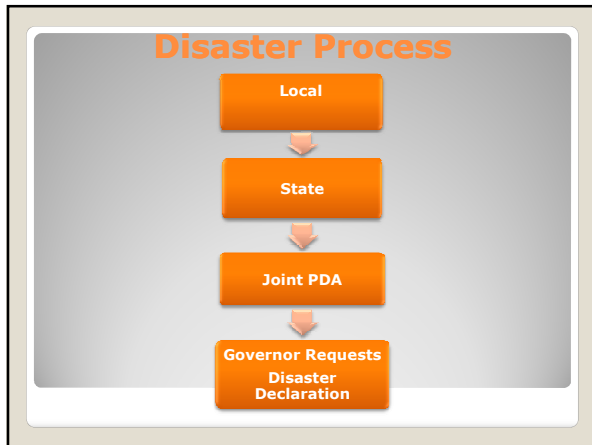
Dec. 21-24, 2010
Washington, Kane, Garfield counties

Damage mostly confined to public infrastructure

Declarations
EOC: Monitoring mode
No requests for help

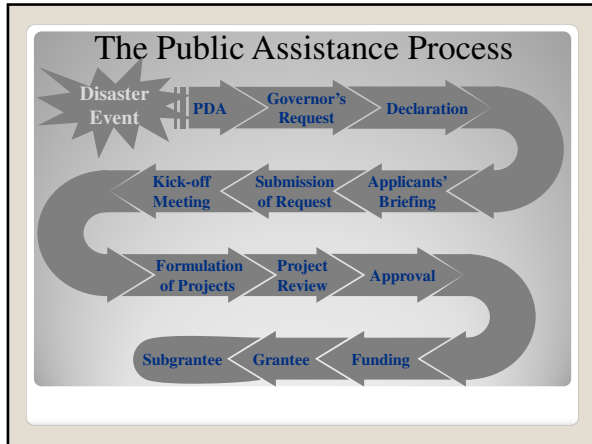


Southern Utah flooding



- 159 projects (Many in Washington County)
- \$11.5 million disaster estimate
- Paid: \$1.1 million, Approved: \$4.2 million
- Awaiting approval: \$7.3 million

Recovery/Mitigation Update on the event



Initial Damage Assessment Determines:

- How bad is it?
- What areas are affected?
- How many people are affected?
- What are the risks to life, safety, and health?
- What is the status of lifeline services?
- How many homes are affected?
- How many businesses are affected?

- Public Assistance – FEMA
- Individual Assistance – FEMA
- Farm Drought – USDA (FSA)
- Disaster Assistance – USDA (FSA)
- Disaster Assistance – NRCS
- Disaster Relief – FHWA
- Loans – SBA

Types of Assistance Available

Public Assistance

The Federal share of assistance is 75% of the eligible cost for emergency measures and permanent restoration.



The local share is 25%.

Response, Recovery, Rebuilding

• What to document:

- Volunteers
- Procurement
- Maintenance
- Contract
- Personnel

Write it down or it didn't happen

Record Keeping

Suggested to keep records for 5 years after the State has been notified that the grant has been closed.

The Federal requirement is a minimum 3 years.



- [Emergencymanagement.utah.gov](http://emergencymanagement.utah.gov)
- FEMA Policy Guide and Digest
<http://www.fema.gov/government/grant/pa/policy.shtm>
- FEMA Equipment Rates
<http://www.fema.gov/government/grant/pa/eqrates.shtm>
- Recovery from Disaster Toolkit
- Local Damage Assessment Form

Resources

Questions?

Joe Dougherty
Public information officer
jdougherty@utah.gov
801-664-1530
Twitter: @UtahEmergency
@BeReadyUtah
@UtahShakeOut
